



THE PUCK CATCHER

Canadian Patent #: 2388124
U.S. Patent #: 7066847

To view assembly video or to order replacement parts go to www.puckcatcher.com

Tools Required: Standard and Phillips screwdrivers, 1/4" nut driver, scissors and safety glasses.

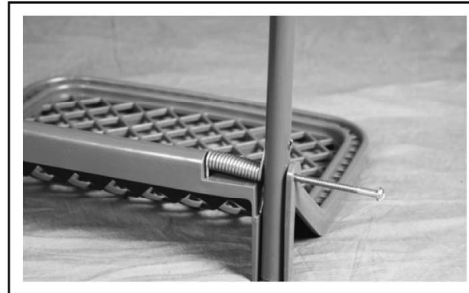
Warning: Use Caution...typical hazards related to springs!

Step 1: Place Springs On Base.



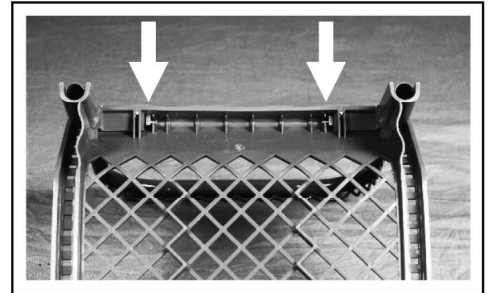
Position L & R springs on base as as shown above, ensuring hooks are pointed in the correct direction.

Step 2: Attach Steel Tube to Base.



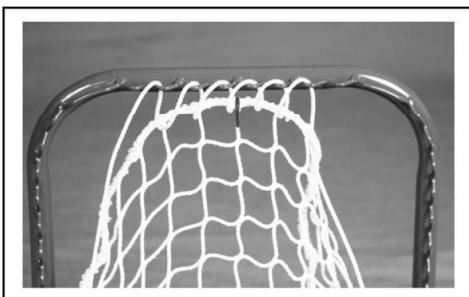
Place tube in position and insert 3-1/2" bolts.

Step 2A: Attach Steel Tube continued.



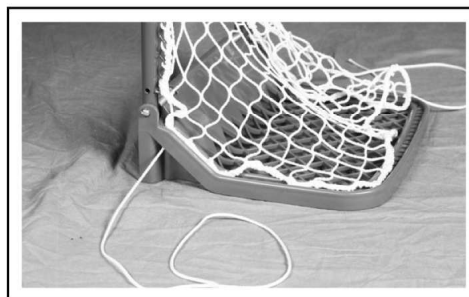
Place square nuts in position on underside of base to receive the 3-1/2" bolts. **DO NOT OVER TIGHTEN. TUBE MUST HINGE FREELY.**

Step 3: Attach Netting.



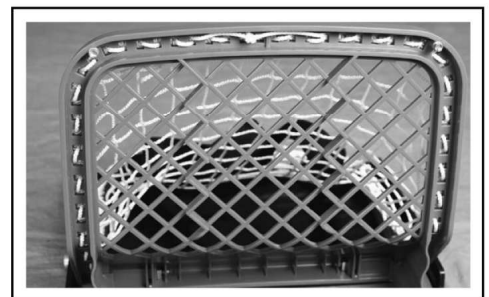
Locate RED mark on border of netting and position at top center of steel tube. Use provided string to attach, working to left and right evenly.
Tip: begin at middle point of string so you have equal length for each side.

Step 3A: Attach Netting continued.



Continue stringing each side to this point. Now pre-fit remaining net to base to determine finished fit. Slight adjustments from this point will ensure a great result.

Step 3B: Netting is Complete.



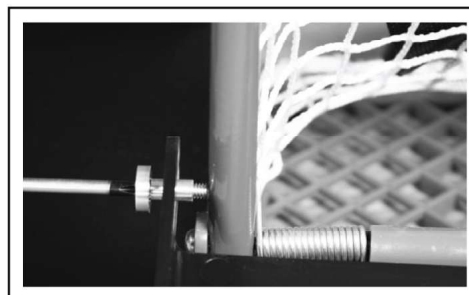
String ends meet at middle point of base.....tie tightly together and remove excess.

Step 4: Attach Shoulder Strap.



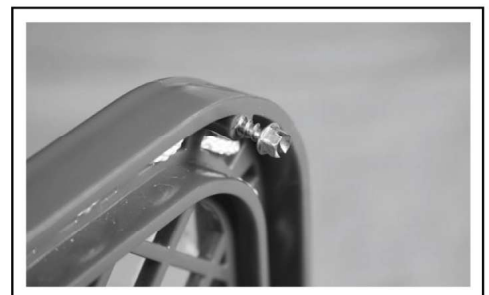
Attach each end of strap to the rectangular eyelets at either corner of steel tube.
Tip: First place slides on strap.

Step 5: Attach Ramp.



Use remaining 1-1/4" bolts and black sleeves to attach L & R side of ramp to steel tube.

Step 6: Install Ice Screws.



Using 1/4" nut driver, turn screws entirely into the 2 mounting points on bottom of base